



CYCLONE SEPARATOR

K, KL, KP, K2

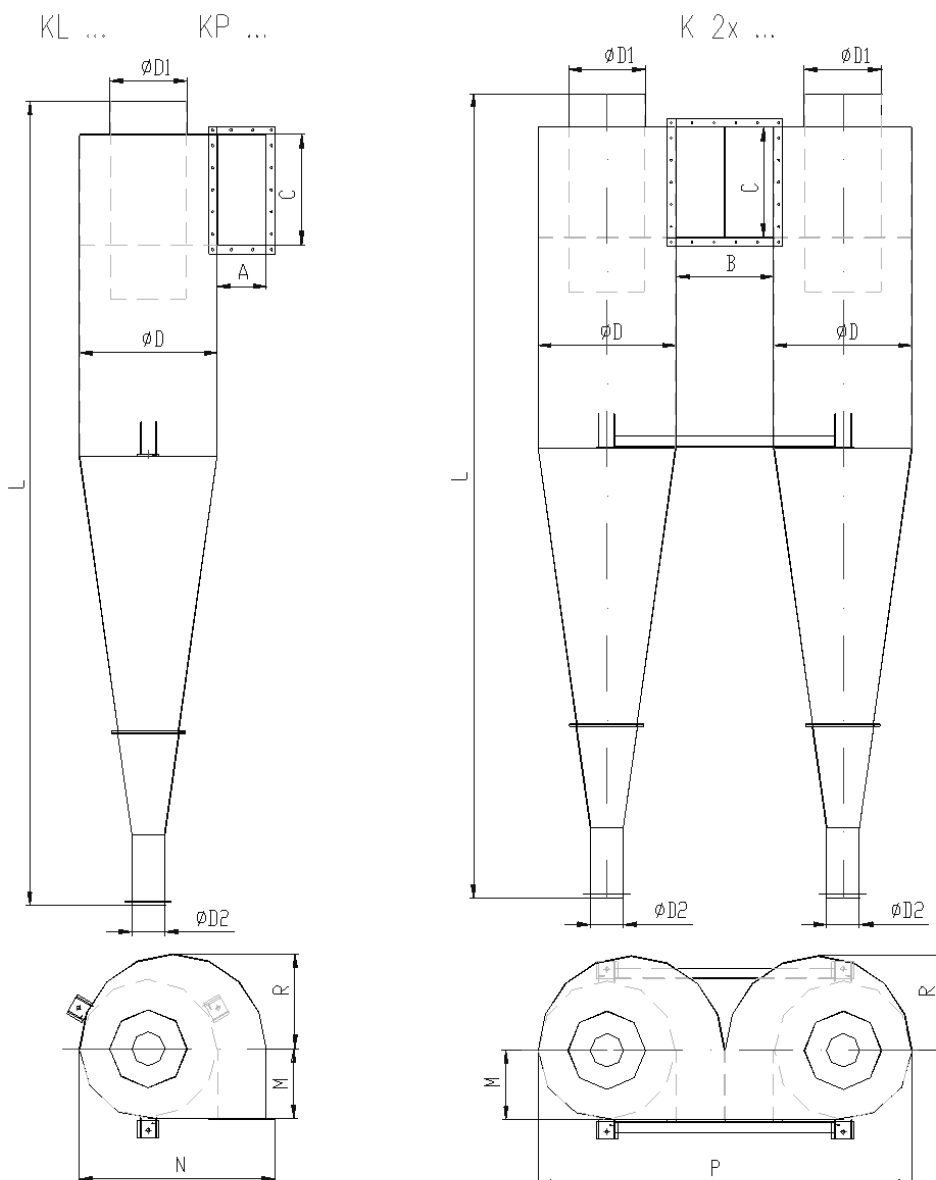
Cyclone separators (cyclones) are determined for the separation of solid particles from extracted air particles. They are used as individual equipment or they configurate into multicyclones. They find their main use in businesses where large amounts of material is extracted, such as for example saw-dust, peel, granules.

We choose the size of the cyclone separators (cyclones) from versions according to specific needs.



		Unit	Type		
			K630	K800	K1000
Basis dimensions	diameter	mm	630	800	1000
	height		3650	4600	5880
Weight	simple	kg	126	194	390
	double		256	325	775
Capacity – simple/double		m ³ /hod	1500-4000/2x	1800-45000/2x	4200-9500/2x
Pressure loss – simple/double*		Pa	1800-800/2x	200-900/2x	250-1000/2x

* The pressure loss depends on the amount of air, the separated raw material and its physical properties.



OZNAČENÍ VELIKOST	A	B	C	D	D1	D2	L	M	N	P	R
630	225	450	500	630	355	152	3650	315	899	1718	429,5
800	250	---	600	800	375	150	4600	449	1040	---	460
1000	378	710	800	1000	560	152	5880	770	1178	2252	585